



6143 North 60th Street
Milwaukee, WI 53218
www.chimerx.com

Certificate of Analysis

Telephone: (414) 535-9506
Toll Free: (800) 626-7833
Fax: (414) 535-9508
Web Support: chimerx.com/support
Email: info@chimerx.com

Geneflo™

1000 Size Standard (ROX Labeled)

Catalog No: 3127

Lot No: 2108002

Package Size: See Product Label

Storage Conditions: +4°C Short-term / -20°C Long-term

Notes: Geneflo™ 1000 Size standards are light sensitive, therefore store in the dark and minimize exposure to light. Avoid multiple freeze / thaw cycles or frequent temperature changes.

Description

Geneflo™ 1000 Size Standard (ROX Labeled) is ideal for sizing DNA fragments from 400 to 1000 bp. The 25 evenly spaced bands of the ladder contain fragments of the following sizes: **400**, 425, 450, 475, **500**, 525, 550, 575, **600**, 625, 650, 675, **700**, 725, 750, 775, **800**, 825, 850, 875, **900**, 925, 950, 975, and **1000** bp. Peak heights of the 100mers (400, 500, 600, 700, 800, 900, and 1000 bp) are spiked for size determination. See Figure 1 below.

Advantages

- Can be used in either capillary or gel electrophoresis
- Ensures accurate and consistent sizing of fragments
- Even spaced, no gaps
- No split peaks

Loading Size

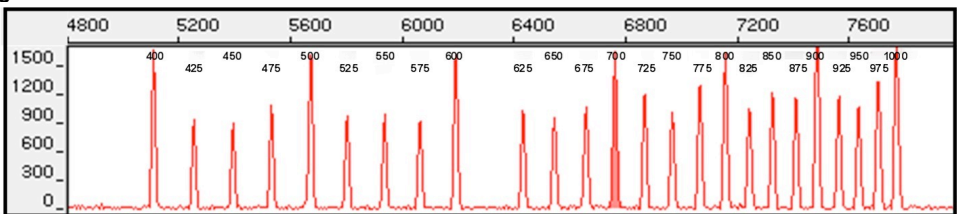
The recommended amount of size standard to load is 1.0 µl per lane.
Mix with 11 µl of super clean formamide.

Storage Buffer

10 mM Tris-HCl (pH 8.0)

11 mM EDTA

Figure 1.



For more information or to re-order, please visit www.chimerx.com