



6143 North 60th Street
Milwaukee, WI 53218
www.chimerx.com

Certificate of Analysis

Telephone: (414) 535-9506
Toll Free: (800) 626-7833
Fax: (414) 535-9508
Web Support: chimerx.com/support
Email: info@chimerx.com

Perfect™ Protein Ladder

Catalog No: 3210

Lot No: See Product Label

Package Size: See Product Label

Storage Conditions: Store at 4°C.

Long-term storage at -20°C.

Note: Product contains SDS, which may precipitate during storage. Mix well after thawing. If necessary, warm at 37°C until product clarifies.

Loading Size

Coomassie Brilliant Blue R-250 stained gels: load is 5.0 µl per lane.

Silver stained gels: dilute protein ladder 1:15 in 1X loading buffer and load 5µl per lane.

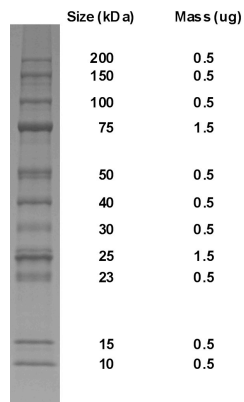
Description

- The Perfect™ Protein Ladder is suitable for sizing proteins from 10 to 200 kDa on acrylamide gels under denaturing conditions.
- The 11 bands of the ladder contain fragments with the following sizes: 10, 15, 23, **25**, 30, 40, 50, **75**, 100, 150, and 200 kDa. For easy reference, the bands at 25 kDa and 75 kDa are three times (3X) brighter than the other bands in the ladder.
- Supplied in ready-to-load buffer containing tracking dyes

Quality Control

5 µl of ladder is run on a 10-20% Tris-Glycine gel to confirm band number and sizes.

Figure 1.



Notes:

1. Chimerx's Perfect™ Protein Ladder is shown on a 10-20% Tris-Glycine gel in 1X Tris/Glycine/SDS Running Buffer.
2. Mass amounts are based on the recommended loading volume of 5 µl per lane.
3. Protein bands at 25 kDa and 75 kDa are three times (3X) brighter than the other bands in the ladder.

For more information or to re-order, please visit www.chimerx.com